



<b>Client:</b>	Kosher Pharma
<b>Accession #:</b>	2604270130
<b>Search Code:</b>	KPH2604270130
<b>Received:</b>	04/27/2026
<b>Reported:</b>	04/27/2026
<b>Lot:</b>	RL-IG1-0126

## Sample Summary

<b>Product:</b>	IGF-1 LR3 1mg	<b>Purity:</b>	99.92%
<b>Identity:</b>	Confirmed	<b>Net Content:</b>	1.23 mg
<b>Appearance:</b>	White Lyophilized Powder		

## Analytical Results

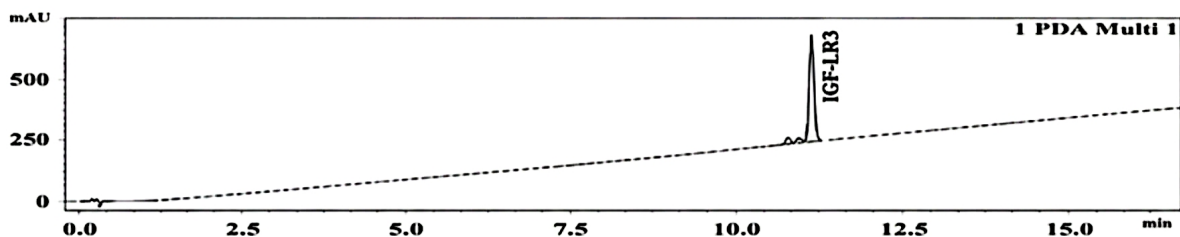
Test	Result
Identity (LC-MS)	IGF-LR3
Purity (HPLC-UV)	99.92%
Net Content	1.23 mg

**Method:** Endotoxin testing performed using Limulus Amebocyte Lysate assay in accordance with USP <85> under validated laboratory conditions.

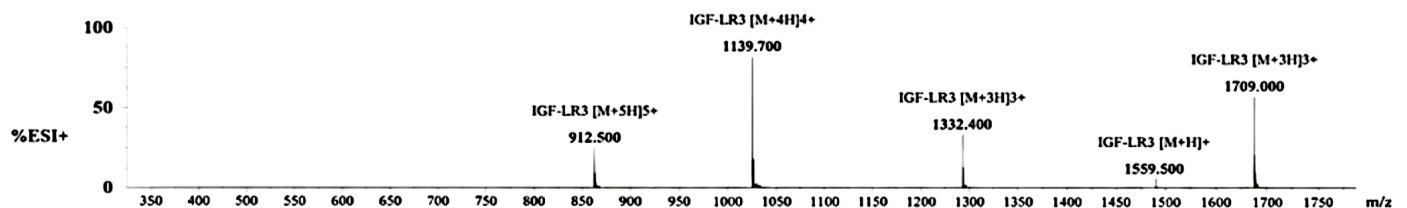
<b>Endotoxin Replicate 1:</b>	Pass	Assay Sensitivity: $\leq 0.05$ EU/mL
<b>Endotoxin Replicate 2:</b>	Pass	Assay Sensitivity: $\leq 0.05$ EU/mL

**Method:** HPLC with UV detection coupled with mass spectrometry (LC-MS).

### Chromatogram



### Mass Confirmation



Principal Chemist

FreedomDiagnosticsTesting.com

Admin@FreedomDiagnostics.net

Proudly Owned and Operated in the USA

The peptide purity analysis reported here was conducted using LCMS/MS under standard laboratory conditions. This analysis is intended for informational purposes only and is specific to the sample(s) provided. The peptides are intended for research & research only and are not approved for human or use, diagnostic, pharmaceutical, or clinical applications. Results should be interpreted qualified process and the source of the intersearch. The accuracy and reliability of these results are dependent on the sample quality, handling, and other experimental variables.